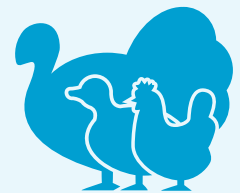


V



# Livestock Diagnostic Products for Poultry

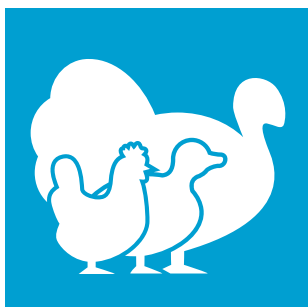
**Kylt® Professional *in vitro*  
Diagnostic Solutions**



[www.kylt.eu](http://www.kylt.eu)

2022

# Kylt® Real-Time (RT-) PCR assays for Poultry



Kylt® provides veterinary diagnostic laboratories with products for the highly sensitive and precise detection of pathogens affecting livestock as well as products for the subsequent characterization of these pathogens.

Kylt® products are developed and manufactured in Germany by veterinary diagnostic experts and are put through rigorous tests in our own daily high-throughput diagnostic routine with samples from all over the world.



## Why Kylt® is the best choice for you

At Kylt® we pride ourselves on supplying easy-to-use products, excellent customer service and the broadest range of assays available on the market today.

We consistently review and update our products and expand our product range to include newly appearing strains and meet upcoming diagnostic needs.

To enable the convenient and economic combination of Real-Time PCR assays in a single run, nearly all Kylt® assays can be run with our universal Kylt® Standard profile for both Real-Time PCR and Real-Time RT-PCR. This saves time, reduces use of consumables and minimizes the blocking of laboratory infrastructure.

## Kylt® Training

In regular intervals we provide an in-depth training for our customers at our site in Germany. This two-day training in small groups teaches the fundamentals for using Real-Time PCR in veterinary diagnostic applications from the sampling to the result. Learn in small groups and prepare your own samples

In addition, all our detection products use the same pipetting volumes.

All Real-Time PCR cyclers available on the market are compatible with the Kylt® product range, no specialized hardware or software is necessary.

Of course the whole process at Kylt®, including R&D, production, storage and shipment as well as customer support is certified according to ISO 9001. Furthermore, selected kits have the MicroVal® certificate for proprietary method, are registered at the German federal authority, Friedrich Loeffler Institut (FLI), as well as in diverse other countries.



Management System  
ISO 9001:2015  
www.tuv.com  
ID 9000003434

## Kylt® Software

With the ongoing development and expansion of our Kylt® product catalogues and increasing complexity of, especially multiplexed, assays as well as various settings for different Real-Time PCR cyclers, you may hesitate to introduce Real-Time PCR in your laboratory. For these issues we have developed our Kylt® Software to simplify entering sample data, transferring

assay settings and evaluating the results, as well as accredited documentation, reporting and LIMS-connection. We recently updated to version 3.2 with new features, please contact us for further information including supported qPCR cyclers at [support@kylt.eu](mailto:support@kylt.eu).

## Regulatory information and availability

All Kylt® products are available as detection Kits, with all necessary components included. The availability of the products depends on the specific regulatory environment in your country. If you need more information on our Kylt® products and their

availability in your region, or if you have a specific demand for a product not listed please visit us on [www.kylt.eu](http://www.kylt.eu) or contact us at [info@kylt.eu](mailto:info@kylt.eu).

# CONTENT

Bacterium	Page	Virus	Page	DIVA	Page
Kylt® Avibacterium parag. (Coryza)	4	Kylt® Duck Baiyangdian Virus	11	Kylt® MG ts-11 DIVA	6, 12
Kylt® APEC (E. coli)	11	Kylt® Duck / Goose Circovirus	11	Kylt® MS-H DIVA	6, 12
Kylt® Bordetella avium	4	Kylt® Duck Enteritis Virus	11	Kylt® MS1 DIVA	6, 12
Kylt® Brachyspira spp.	4	Kylt® Duck Hepatitis Virus	11	Kylt® Parvo DIVA 1	8, 12
Kylt® Campylobacter spp.	4	Kylt® EDS76	7	Kylt® rechVT DIVA 1	8, 12
Kylt® Campylobacter hepaticus	4	Kylt® Fowl Adenovirus	7	Kylt® rechVT DIVA 2	8, 12
Kylt® Campy. jejuni, coli & lari	4	Kylt® Fowlpox Virus	7	Kylt® rechVT DIVA 3	8, 12
Kylt® Chlamydiaceae <i>products</i>	4	Kylt® Goose Polyomavirus	7	Kylt® SGP & 9R DIVA	5, 11, 12
Kylt® Clostridioides difficile	4	Kylt® HVT	7	Kylt® SE DIVA 1	5, 12
Kylt® Clostridium perfringens	4	Kylt® IB-aCoV	9	Kylt® SE DIVA 2	5, 12
Kylt® Enterococcus cecorum	4	Kylt® IB Virus <i>series</i>	9	Kylt® ST DIVA 1	5, 12
Kylt® E. coli	4	Kylt® IBDV Screening	7		
Kylt® Erysipelothrix rhusiopathiae	4	Kylt® IBDV Typing (Gumboro)	7	<b>Enzyme Mixes &amp; Controls</b>	<b>Page</b>
Kylt® Mycoplasma <i>series</i>	6	Kylt® ILT	7	Kylt® 2x qPCR-Mix	13
Kylt® ORT	4	Kylt® Influenza <i>series</i>	10	Kylt® 2x RT-qPCR-Mix	13
Kylt® Pasteurella multocida	4	Kylt® MDV & Rispens DIVA	8, 12	Kylt® Brachyspira spp. Standard	13
Kylt® Riemerella anatipestifer	4	Kylt® Paramyxovirus 1 <i>products</i>	8	Kylt® Host Cells	13
Kylt® Salmonella <i>series</i>	5	Kylt® Parvovirus <i>products</i>	8	Kylt® IBV Standard	13
		Kylt® rechVT DIVA 1	8, 12	Kylt® IC-RNA	13
<b>Parasite</b>	<b>Page</b>	Kylt® rechVT DIVA 2	8, 12	Kylt® Infl. Virus Type A Standard	13
Kylt® Histomonas meleagridis	4	Kylt® rechVT DIVA 3	8, 12	Kylt® Negative Control	13
		Kylt® Reticuloendotheliosis Virus	8		
<b>Virus</b>	<b>Page</b>	Kylt® Turkey Astrovirus	11	<b>Purification</b>	<b>Page</b>
Kylt® Avian Encephalomyelitis	7	Kylt® Turkey Hemorrh. Ent. Virus	8	Kylt® DNA Extractionmix II	14
Kylt® Avian Hepatitis E	7	Kylt® Turkey Viral Hepatitis	8	Kylt® DNA Extractionmix III	14
Kylt® aMPV <i>products</i> (ART, TRT)	7	Kylt® West-Nile-Virus	8	Kylt® Purifier	15
Kylt® Avian Nephritis Virus	7			Kylt® Purifier 48	15
Kylt® Avian Reovirus	7	<b>DIVA</b>	<b>Page</b>	Kylt® Purifier Spin Tips	15
Kylt® Avian Reovirus S1133 DIVA	7, 12	Kylt® Avian Reovirus S1133 DIVA	7, 12	Kylt® Purifier Plates	15
Kylt® Avian Rotavirus A&D	7	Kylt® MDV & Rispens DIVA	8, 12	Kylt® RNA / DNA Purification	14
Kylt® Chicken Anaemia Virus	7	Kylt® MG 6/85 & F DIVA	6, 12	Kylt® RNA / DNA Purification HTP	14,15
Kylt® Chicken Astrovirus	7			Kylt® Salmonella Purification HTP	14,15

## Kylt® Real-Time (RT-) PCR Setup

Kylt® Real-Time (RT-) PCR Kits comprise all reagents including controls, enzyme mixes and pathogen-specific primers and probes for an accurate pathogen detection.

Kylt® Real-Time (RT-) PCR products comprise control reagents to prove the validity of the assay. Pathogen specific Positive Controls help monitor the efficiency of the assay. With the Negative Control any contamination of the kit components or used consumables can be ruled out.

The products are additionally provided with Internal Controls to verify sufficient sampling, correct sample preparation and the overall Real-Time PCR run. The validity check of the assay can be supplemented using further Kylt® control assays listed on page 13. For more information, please contact us at [support@kylt.eu](mailto:support@kylt.eu).

Kylt® Real-Time (RT-) PCR setups work with commonly used fluorescent dyes FAM, HEX, Cy5 and TXR. For detailed information about channels needed for the individual products, please visit us on [www.kylt.eu](http://www.kylt.eu).

## Kylt® Bacterial Pathogens and Parasites

Tested Parameter	Description	Reactions				
		100	25			
<b>NEW</b> Avibacterium paragallinarum	Coryza; Species-specific detection	31551	31552	X		
Bordetella avium	Species-specific detection	31441	31442	X	X	
Brachyspira spp.*	Genus-specific screening/ detection	31199	31200	X	X	X
Campylobacter spp.	Genus-specific screening/ detection	31402	31403	X	X	X
<b>NEW</b> Campylobacter hepaticus	Species-specific detection	31308	31309	X		
<b>NEW</b> Campylobacter jejuni, coli & lari	Separate and species-specific detection	31451	31452	X	X	X
Chlamydiaceae screening	Genus-specific screening/ detection	31647	31648	X	X	X
Chlamydophila abortus	Species-specific detection	31649	31650	X	X	X
Chlamydophila avium	Species-specific detection	31641	31642	X		
Chlamydophila gallinacea	Species-specific detection	31643	31644	X		
Chlamydophila psittaci	Species-specific detection	31637	31638	X	X	X
Clostridioides difficile Toxin genes A & B	Separate gene detection of Toxins A & B	31320	31321	X	X	
Clostridium perfringens	Separate gene detection of Major Toxins: cpa, cpep, cpb, cpi & Minor Toxins: netB, cpen, cpb2	31034	31035	X	X	X
<b>NEW</b> Enterococcus cecorum	Species-specific detection	31513	31514	X		
Escherichia coli screening	Species-specific screening/ detection	31316	31317	X	X	X
Erysipelothrix rhusiopathiae	Erysipelas; Species-specific detection	31770	31771	X	X	X
Histomonas meleagridis	Species-specific detection	31416	31417	X	X	
Ornithobacterium rhinotracheale	Species-specific detection	31030	31031	X	X	
Pasteurella multocida	Separate species-specific as well as toxA gene detection	31334	31335	X	X	X
Riemerella anatipestifer	Species-specific detection	31032	31033		X	X




\* please refer to section "Kylt® Real-Time (RT-) PCR controls" on page 13 for further information on available **Kylt® Quantitative Standards**.

## Kylt® Salmonella Series

Tested Parameter	Description	Reactions				
		100	25			
Salmonella spp.	Species-specific detection; Licensed by Friedrich-Loeffler-Institute (FLI-B 656); Validated according to ISO 16140; Including DNA Extractionmix II	31019	–	X	X	X
<b>NEW</b> Salmonella spp. 2.0 MICROVAL®    	Species-specific detection; Validated according to ISO 16140; Including DNA Extractionmix II	31001	-	X	X	X
<b>NEW</b> Salmonella spp. 2.0 MICROVAL®    	Species-specific detection; Validated according to ISO 16140	31302	-	X	X	X
Salmonella Enteritidis	Serovar-specific detection	31205	31206	X	X	
SE DIVA 1	Serovar Salmonella Enteritidis specific detection and DIVA 441/041 (ade-/his-); strains used in live vaccines e.g. by BI (Merial) and CEVA (IDT)	31159	31160	X		
SE DIVA 2	Serovar Salmonella Enteritidis specific detection and Salmonella Enteritidis DIVA Sm24/Rif12/Ssq; Strain used in the live vaccines e.g. by ELANCO	31161	31162	X	X	
Salmonella Enteritidis & Salmonella Typhimurium	Separate and serovar-specific detection of SE and ST	31165	31166	X	X	
SGP & 9R DIVA	Separate and serovar-/biovar-specific detection of Salmonella Gallinarum, Pullorum and DIVA of vaccine strain 9R ( <b>Conventional PCR Kit</b> )	31420	31421	X		
<b>NEW</b> Salmonella Infantis	Serovar-specific detection	31521	31522	X	X	
<b>NEW</b> Salmonella Paratyphi B	Serovar-specific detection	31519	31520	X	X	
Salmonella Typhimurium	Serovar-specific detection	31207	31208	X	X	
ST DIVA 1	Serovar-specific detection and DIVA ST-Mutant (Histidin-Adenin-auxotroph); Strain used in live vaccines e.g. by CEVA (IDT)	31855	31856	X		
<b>NEW</b> Salmonella Virchow	Serovar-specific detection	31523	31524	X	X	



## Kylt® Mycoplasma Series

Tested Parameter	Description	Reactions				
		100	25			
Mycoplasma gallisepticum & Mycoplasma synoviae	Separate and species-specific detection	31020	31021	X	X	X
Mycoplasma gallisepticum	Species-specific detection	31022	31023	X	X	X
Mycoplasma gallisepticum DIVA 6/85 & F-Strain	DIVA 6/85 & F-strain; Strain used in diverse live vaccine products e.g. by Ceva, Elanco, MSD and Zoetis; Cave: additional species-specific testing for presence of Mycoplasma gallisepticum is mandatory	31197	31198	X	X	
Mycoplasma gallisepticum DIVA ts-11	DIVA ts-11; Strain used in live vaccine products by Bioproperties; Cave: additional species-specific testing for presence of Mycoplasma gallisepticum is mandatory	31410	31411	X	X	
Mycoplasma iowae	Species-specific detection	31026	31027	X	X	
Mycoplasma meleagridis	Species-specific detection	31028	31029	X	X	
<b>NEW</b> Mycoplasma spp.	Genus-specific screening/ detection	31116	31117	X	X	X
Mycoplasma synoviae	Species-specific detection	31024	31025	X	X	X
Mycoplasma synoviae DIVA MS-H	Species-specific detection and DIVA MS-H; Strain used in live vaccine products by Bioproperties	31134	31135	X	X	
Mycoplasma synoviae DIVA MS1	Species-specific detection and DIVA MS1; Strain used in live vaccine products by MSD	31412	31413	X	X	



## Kylt® Viral Pathogens

Tested Parameter	Description	Reactions				
		100	25			
Avian Encephalomyelitis Virus	Species-specific detection	31835	31836	X	X	
Avian Hepatitis E Virus	aHEV, Hepevirus, Big Liver and Spleen Disease Virus (BLSD); Species-specific detection	31100	31101	X		
Avian Metapneumovirus Subtype A & B	TRT, ART; Separate and serotype-specific detection	31072	31073	X	X	X
Avian Metapneumovirus Subtype C	TRT, ART Serotype-specific detection	31074	31075	X	X	X
Avian Metapneumovirus Subtype D	TRT, ART; Serotype-specific detection	31076	31077		X	
Avian Nephritis Virus	Species-specific detection	31098	31099	X		
Avian Reovirus	Species-specific detection	31209	31210	X	X	X
<b>NEW</b> Avian Reovirus S1133 DIVA	Vaccine strain S1133-specific detection; Cave: additional species-specific testing for Avian Reovirus field strains is recommended	31873	31874	X		
Avian Rotavirus A & D	Separate and serotype-specific detection	31104	31105	X	X	X
Chicken Anaemia Virus	Species-specific detection	31758	31759	X		
Chicken Astrovirus Group A & B	Species-specific detection including types A & B	31181	31182	X		
<b>NEW</b> Egg Drop Syndrome Virus	EDS76, 127-like, Duck Adenovirus; Species-specific detection	31581	31582	X		X
Fowl Adenovirus	Species-specific detection, detects also Turkey Adenovirus	31744	31745	X	X	
Fowlpox Virus	Species-specific detection	31694	31695	X	X	X
Goose Polyomavirus	Species-specific detection	31414	31415			X
Herpesvirus of Turkeys	HVT, Meleagrid Alphaherpesvirus 1, MeHV-1, MDV3; Species-specific detection	31318	31319	X	X	
<b>NEW</b> Infectious Bursal Disease Virus screening	Species-specific screening / detection including serotypes 1 & 2	31044	31045	X	X	
Infectious Bursal Disease Virus Typing (Gumboro)	Separate and genogroup-specific detection / differentiation of genogroup 3 ("very virulent") from all other genogroups incl classical vaccine strains; Cave: additional species-specific detection by IBDV screening is mandatory	31443	31444	X		
Infectious Laryngotracheitis Virus	ILT, Gallid Herpesvirus (GaHV-1); Species-specific detection; Licensed by Friedrich-Loeffler-Institute (FLI-C 075)	31847	31848	X		

## Kylt® Viral Pathogens – continued

Tested Parameter	Description	Reactions				
		100	25			
Marek's Disease Virus (MDV) Detection & DIVA Rispens	Species-specific detection and DIVA Rispens; Strain Rispens / CVI 988 used in live vaccine products	31645	31646	X	X	
Muscovy Duck Parvovirus & Goose Parvovirus Screening	Species-specific detection of Anseriform Dependoparvovirus 1 incl. Muscovy Duck and Goose Parvovirus	31138	31139			X
Muscovy Duck Parvovirus & Goose Parvovirus Typing	Separate and species-specific detection	31171	31172			X
Goose Parvovirus - DIVA 1 Hoekstra	Vaccine strain Hoekstra-specific detection; Strain used in live vaccine products by BI (Merial) and CEVA (IDT); Additional species-specific detection is recommended	31175	31176			X
Avian Paramyxovirus 1	Newcastle Disease Virus (NDV), Species-specific detection	31151	31152	X	X	X
Avian Paramyxovirus 1 Pathotyping	NDV; Separate species-specific detection and detection/ differentiation of lentogenic vs. meso-/ velogenic strains	31750	31751	X	X	X
recHVT DIVA 1	Detection of recombinant HVT, NDV & IBDV strains used in live vaccine products by MSD and BI (Merial)	31851	31852	X		
<b>NEW</b> recHVT DIVA 2	Detection of recombinant HVT & IBDV strains used in live vaccine products by BI (Merial)	31853	31854	X		
<b>NEW</b> recHVT DIVA 3	Detection of recombinant HVT & NDV strains used in live vaccine products by CEVA	31156	31157	X		
Reticuloendotheliosis Virus	REV; Species-specific detection	31424	31425	X	X	X
Turkey Hemorrhagic Enteritis Virus	TuHEV; Species-specific detection	31754	31755		X	
Turkey Viral Hepatitis	TVH, Picornaviridae; Species-specific detection	31102	31103	X	X	
<b>NEW</b> West-Nile-Virus	WNV; Species-specific detection	31818	31819	X	X	X



# Kylt® Infectious Bronchitis Series

Tested Parameter	Description	Reactions				
		100	25			
Infectious Bronchitis Virus & further Avian Coronaviruses *	Species-specific screening/ detection of avian Coronavirus including all IBV variants and Turkey Coronavirus	31193 <sup>+</sup>	31194	X	X	
Variant 4/91 / 793B / CR88	Variant-specific detection	31082 <sup>+</sup>	31083	X		
Variant Massachusetts	Variant-specific detection	31084 <sup>+</sup>	31085	X		
Variant D274	Variant-specific detection	31086 <sup>+</sup>	31087	X		
Variant Arkansas	Variant-specific detection	31088 <sup>+</sup>	31089	X		
Variant Italy02	Variant-specific detection	31090 <sup>+</sup>	31091	X		
Variant D1466	Variant-specific detection	31092 <sup>+</sup>	31093	X		
Variant QX	Variant-specific detection	31094 <sup>+</sup>	31095	X		
Variant O2	Variant-specific detection	31187 <sup>+</sup>	31188	X		
Variant Q1	Variant-specific detection	31179 <sup>+</sup>	31180	X		
Variant IB80	Variant-specific detection	31736 <sup>+</sup>	31737	X		
<b>NEW</b> Variant D181	Variant-specific detection	31201	31202	X		
Kit Bundle	Bundle of IB-aCoV and 10 IBV variants (marked with <sup>+</sup> )	31300	–	X		

\* please refer to section "Kylt® Real-Time (RT-) PCR controls" on page 13 for further information on available **Kylt® Quantitative Standards**.






## Kylt® Avian Influenza Virus

Tested Parameter	Description	Reactions				
		100	25			
Influenza Virus Type A (exogenous control, IC-RNA)*	Species-specific detection; Licensed by Friedrich-Loeffler-Institute (FLI-B 072)	31068	31069	X	X	X
Influenza Virus Type A (endogenous control, $\beta$ -Actin) *	Species-specific detection; Licensed by Friedrich-Loeffler-Institute (FLI-C 024)	31163	31164	X	X	X
Influenza Virus Type A - H5N1	Separate detection of AI subtype H5 and N1	31778	31779	X	X	X
Influenza Virus Type A - H9N2	Separate detection of AI subtype H9 and N2	31740	31741	X	X	X
<b>NEW</b> Influenza Virus Type A - MH9N2	Separate detection of Influenza A, subtype H9 and N2	31875	31876	X	X	X
<b>NEW</b> Influenza Virus Type A - H5H7H9	Separate detection of AI subtype H5, H7 and H9	31810	31811	X	X	X
<b>NEW</b> Influenza Virus Type A - MH5N8	Separate detection of Influenza A, subtype H5 and N8	31877	31878	X	X	X
Influenza Virus Type A H1	Detection of AI subtype H1	31774	31775	X	X	X
Influenza Virus Type A H3	Detection of AI subtype H3	31859	31860	X	X	X
<b>NEW</b> Influenza Virus Type A H4	Detection of AI subtype H4	31456	31457	X	X	X
Influenza Virus Type A H5	Detection of AI subtype H5	31368	31369	X	X	X
Influenza Virus Type A H6	Detection of AI subtype H6	31861	31862	X	X	X
Influenza Virus Type A H7	Detection of AI subtype H7	31370	31371	X	X	X
Influenza Virus Type A H9	Detection of AI subtype H9	31070	31071	X	X	X
Influenza Virus Type A N1	Detection of AI subtype N1	31374	31375	X	X	X
Influenza Virus Type A N2	Detection of AI subtype N2	31792	31793	X	X	X
Influenza Virus Type A N3	Detection of AI subtype N3	31784	31785	X	X	X
Influenza Virus Type A N5	Detection of AI subtype N5	31796	31797	X	X	X
<b>NEW</b> Influenza Virus Type A N6	Detection of AI subtype N6	31354	31355	X	X	X
Influenza Virus Type A N8	Detection of AI subtype N8	31788	31789	X	X	X

\* please refer to section "Kylt® Real-Time (RT-) PCR controls" on page 13 for further information on available **Kylt® Quantitative Standards**.

## Kylt® Conventional (RT-)PCR (requires Agarose Gel Electrophoresis)

Tested Parameter	Description	Reactions				
		100	25			
Avian Pathogenic Escherichia Coli	APEC; Detection of 8 most relevant virulence factor coding genes for assumption of pathogenicity of tested strain	31328*	31047	X	X	X
Salmonella Gallinarum & Pullorum & DIVA Strain 9R	Separate and serovar-/biovar-specific detection of Salmonella Gallinarum, Pullorum and DIVA of vaccine strain 9R	31420	31421	X		
Duck Baiyangdian Virus	BYDV, Flaviviridae; Species-specific detection	31120	31121			X
Duck Circovirus & Goose Circovirus	Separate and species-specific detection	31062	31063			X
Duck Enteritis Virus	Anatid Herpesvirus 1; Species-specific detection	31140	31141			X
Duck Hepatitis Virus	DHV-1, Picornaviridae; Species-specific detection	31122	31123			X
Turkey Astrovirus	Separate and type-specific detection and differentiation of type 1 and type 2	31881*	31137		X	

\* article consists of four kits of 25 reactions

## Kylt® DIVA Products

Differentiating **I**nfecte**d** from **V**accine**d** **A**nimals (DIVA) allows for detection of a specific vaccine strain and differentiating it from field strains of the according pathogen in one reaction setup. By using the DIVA principle, challenges in interpretation of “false”, i.e. potentially clinical irrelevant signals due to the presence of vaccine strains in the sample are a matter of the past.



Pathogen	DIVA-PCR-Test System	Vaccine Supplier	Commercial Name*	Art.-No 100 Rxn	Art.-No. 25 Rxn
Avian Reovirus S1133 DIVA	Av. Reovirus S1133	Various products using strain S1133		31873	31874
Mycoplasma synoviae	MS-H DIVA	Bioproperties	Vaxsafe® MS	31134	31135
	MS1 DIVA	MSD	Nobilis® MS Live	31412	31413
Mycoplasma gallisepticum	MG 6/85 DIVA	Various products using strain 6/85		31197	31198
	MG ts-11 DIVA	Merial	MG TS-11	31410	31411
Salmonella Enteritidis	SE DIVA 1	CEVA (IDT)	Salmovac® SE Salmovac® 440 Gallivac® SE	31159	31160
	SE DIVA 2	Elanco	AviPro® Salmonella Vac E AviPro® Salmonella DUO	31161	31162
Salmonella Typhimurium	ST DIVA 1	CEVA (IDT)	Zoosaloral H Zoosal T	31855	31856
Salmonella Gallinarum/ Pullorum	SGP & 9R DIVA	Various products using strain 9R		31420	31421
HVT + NDV + IBDV	recHVT DIVA 1	MSD	Innovax® ND IBD	31851	31852
HVT + IBDV	recHVT DIVA 2	Merial	VAXXITEK® HVT + IBD	31156	31157
HVT + NDV	recHVT DIVA 3	CEVA	Vectormune® ND	31853	31854
Marek / MDV	MDV & Rispens DIVA	Various products using strain Rispens		31645	31646
Muscovy Duck / Goose Parvovirus	Parvo DIVA 1	Merial	Palmivax® and Parvokan® (strain Hoekstra)	31175	31176

\* Non-exhaustive list of products; the respective vaccine strain may also be available in your region in another product and/or with another brand name.

## Kylt® Enzyme Mixes

comprise outstanding performance and stability, including Real-Time PCR with or without Reverse Transcription.

Product	Description	Art.-No 100 reactions
Kylt® 2x qPCR-Mix	2 x concentrated PCR Mix for Real-Time PCR	31867
Kylt® 2x RT-qPCR-Mix	2 x concentrated PCR Mix for one-step Real-Time RT-PCR	31868

## Kylt® Quantitative Standards

support pathogen quantification of respective samples. These standards consist of a set of six quantitative standards and one negative control. They comprise a dilution series with defined genome equivalents.

Product	Description	Reactions	Art.-No.
Brachyspira spp.	To be used with the corresponding PCR Kit Kylt® Brachyspira spp. (31199 / 31200)	10	31841
Infectious Bronchitis Virus	To be used with the corresponding PCR Kit Kylt® IB-aCoV (31193 / 31194)	10	31422
Influenza Virus Type A	To be used with the corresponding PCR Kit Kylt® IVA beta (31163 / 31164) or Kylt® Infl. A (31068 / 31069)	10	31423

## Kylt® Real-Time (RT-)PCR Controls

Product	Description	Reactions	Art.-No.
Host Cells	Detection of both host's beta-actin mRNA and spiked Internal Control RNA, Control reaction kit	100	31106
		25	31107
IC-RNA	Internal Control RNA	100	31132
Negative Control		1 mL	31133



# Kylt® Nucleic Acid Preparation

**Kylt® RNA / DNA Purification Kits** are intended for the purification of high quality RNA and DNA from a vast variety of veterinary sample matrices or from pure bacterial or viral culture isolates. The spin-column based kit is intended for manual application in low- to medium-throughput. The magnetic bead based kit can be automated on any magnetic bead processor or almost all liquid handlers for medium- to high-throughput. Please inquire for application support.

**Kylt® DNA Extractionmixes** are intended for simplified and economic DNA extraction from pure bacterial isolates or bacterial enrichments only.

Product	Description	Content / Rxn	Art.-No
RNA / DNA Purification Kit	Combined RNA and DNA purification from veterinary samples (spin-column based)	50	31315
RNA / DNA Purification HTP	Magnetic bead based combined RNA and DNA purification kit for veterinary diagnostic samples. Suitable for Kylt® Purifier and Kylt® Purifier 48	4x 96	31826
<b>NEW</b> Salmonella Purification HTP	Magnetic bead based DNA purification from Salmonella pre-enrichment samples. Suitable for Kylt® Purifier and Kylt® Purifier 48	4x 96	31433
DNA Extractionmix II	DNA extraction from pure bacterial isolates or bacterial enrichments	100	31398
DNA Extractionmix III	DNA extraction as above from gram-positive bacteria (e.g. Listeria monocytogenes)	100	31404



# Kylt® Purification System and Consumables

The **Kylt® Purifier** and **Kylt® Purifier 48** are our new solutions for the automated magnetic bead-based purification of RNA and DNA from any sample. These systems feature extremely fast processing with a run-time of about 30 minutes (excluding lysis) for up to 96 samples to purify DNA and RNA from diagnostic samples or to purify DNA from Salmonella pre-enrichment-samples.



Product	Description	Content / Rxn	Art.-No
<b>NEW</b> Purifier	Purification system for magnetic bead based kits. Up to 96 samples are processed in under 30 minutes. Intended for high-throughput laboratories	1 unit	31436
<b>NEW</b> Purifier 48	Purification system for magnetic bead based kits. Up to 48 samples are processed in under 30 minutes. Intended for low to medium throughput laboratories	1 unit	31748
RNA / DNA Purification HTP	Magnetic bead based combined RNA and DNA purification kit for veterinary diagnostic samples. Suitable for Kylt® Purifier and Kylt® Purifier 48	4x 96	31826
<b>NEW</b> Salmonella Purification HTP	Magnetic bead based DNA purification from Salmonella pre-enrichment samples. Suitable for Kylt® Purifier and Kylt® Purifier 48	4x 96	31433
<b>NEW</b> Purifier Spin Tips	Plate with 96 separate spin tips, used by the Kylt® Purifier to mix the well contents by stirring. One set used per run	5 Plates / 480 Rxn	31434
<b>NEW</b> Purifier Plates	Plates to be used for the several reactions and reagents during automated nucleic acid purification. 4 - 5 plates used per run	20 Plates / 384 - 480 Rxn	31435



# Kylt®

## stands for...

### HIGH QUALITY

Development and manufacturing in Germany are ISO 9001 certified

### RELIABILITY

Highly satisfactory and reliable high-throughput routine diagnostic

### ACCURACY

Sensitive, precise and fully validated detection of pathogens

AniCon Labor GmbH | Muehlenstr. 13 | 49685 Hoeltinghausen | Germany | Phone + 49 (0) 44 73 94 38 30 | [info@kylt.eu](mailto:info@kylt.eu) | [www.kylt.eu](http://www.kylt.eu)

**For veterinary diagnostic use only.** For in vitro use only. Regulatory requirements vary by country, these products may not be available in your geographic area. © 2022 AniCon Labor GmbH. All rights reserved. The trademark mentioned herein is the property of AniCon Labor GmbH or their respective owners.

